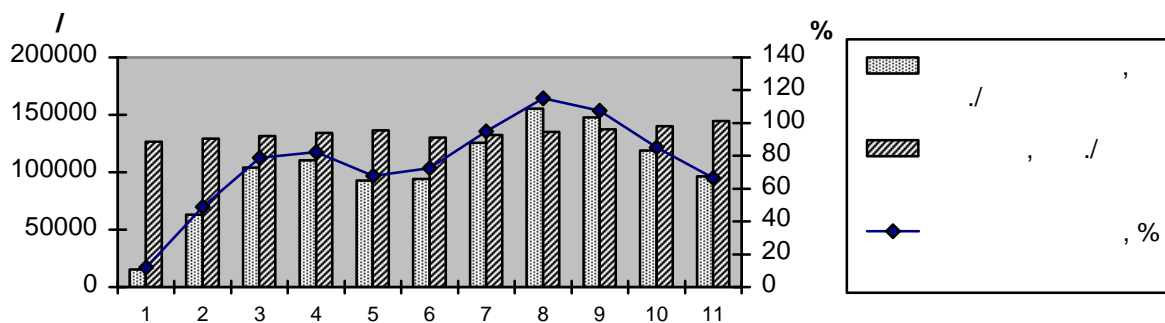




		, %				, /			
		2008 .	2009 .	2010 .					
							-	.	
1	– (P <sub>80</sub> K <sub>120</sub> )	15,46	16,21	15,21	15,63	2691	-	-	-
2	N <sub>60</sub> P <sub>80</sub> K <sub>120</sub>	14,97	15,71	14,71	15,13	3445	-	754	-
3	N <sub>120</sub> P <sub>80</sub> K <sub>120</sub>	14,47	15,21	13,98	14,55	3835	-	1144	-
4	N <sub>180</sub> P <sub>80</sub> K <sub>120</sub>	13,49	14,47	13,24	13,73	3634	-	943	-
5	N <sub>240</sub> P <sub>80</sub> K <sub>120</sub>	12,52	13,73	13,01	13,09	3337	-	646	-
6	P <sub>80</sub> K <sub>120</sub> <sub>50</sub>	15,46	16,06	14,97	15,50	3883	1192	-	-
7	N <sub>60</sub> P <sub>80</sub> K <sub>120</sub> <sub>50</sub>	13,98	14,71	13,73	14,14	3979	-	-	1288
8	N <sub>120</sub> P <sub>80</sub> K <sub>120</sub> <sub>50</sub>	13,01	14,23	13,49	13,58	4195	-	-	1504
9	N <sub>180</sub> P <sub>80</sub> K <sub>120</sub> <sub>50</sub>	12,04	13,24	12,52	12,60	3770	-	-	1079
10	N <sub>240</sub> P <sub>80</sub> K <sub>120</sub> <sub>50</sub>	11,56	12,76	12,04	12,12	3425	-	-	734
11	N <sub>345</sub> P <sub>130</sub> K <sub>705</sub>	11,08	12,28	11,56	11,64	3147	-	456	-



31 /

*S.A. Grishin, I.I. Brysozovsky, Kaliningrad Technical University, Sovetskii pr. 1, Kaliningrad, 236000 Russia*  
E-mail: [grishin1409@vandex.ru](mailto:grishin1409@vandex.ru), [agronomia@mail.ru](mailto:agronomia@mail.ru)

**Keywords:** optimization of potato nutrition, green manure, mineral fertilizers, yielding capacity, starch content.