

• • • • • , • • • • • , • • • • • , • • • • • ,

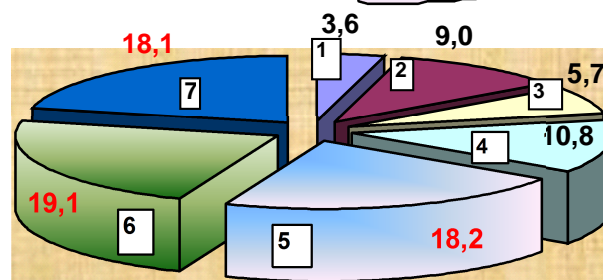
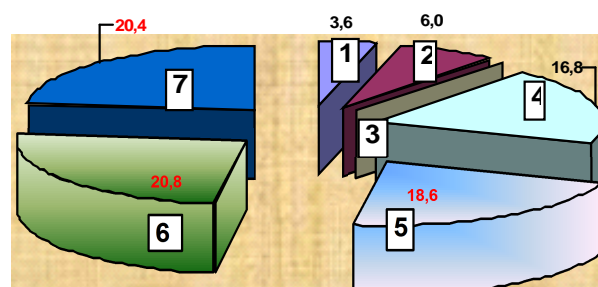
$$\begin{aligned} & 4,9-7\%, \quad (25) - 60; \\ & (2) - 120; \text{N-N}_3 - 4; \text{N-N}_4 - 12 / \\ & -3,5 - /100; -5,3. \end{aligned}$$

25 : 1) (); 2)
; 3) 10-12 (); 4)

); 6) (+ 25
+); 7) -
(40 +).
(-

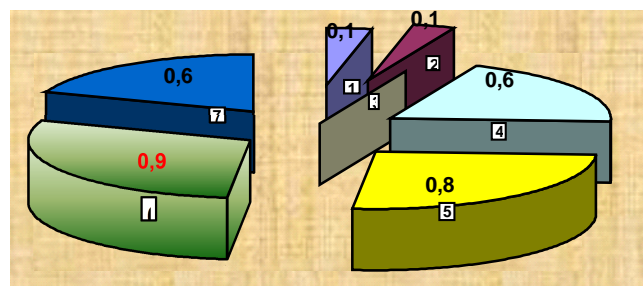
$$(\quad).$$

40 . ()
 ()
 (.1).
 (18,1-20,4). (18,2-18,6) (19,1-20,8)

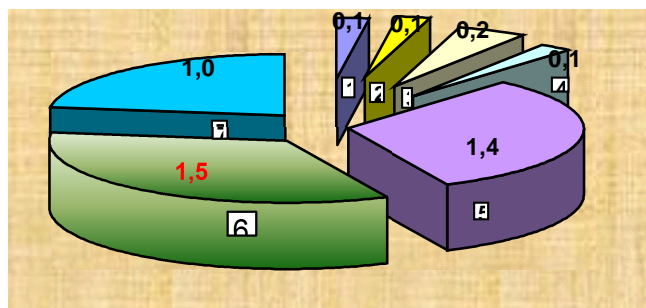


. 1 (/)

(1,5 /), (.2). (0,9 /)
Trichoderma



(/)



. 420059,

, 20 , e-mail: niiexp@rambler.ru

BIOLOGICAL ACTIVITY OF LEACHED CHERNOZEM UNDER RESOURCE-SAVING SYSTEMS OF BASIC TILLAGE

M.M. Il'yasov, A.Kh. Yapparov, I.A. Degtyareva

Tatar Research Institute of Agrochemistry and Soil Science, Orebburgskii trakt 20a, Kazan, 420059 Tatarstan Republic, Russia
Summary. The stimulating effect of step and chisel tillage performed once per rotation cycle and followed by surface tillage on the vital activity of soil microflora was revealed.

Key words: biological activity, resource-saving systems, basic tillage, leached chernozem.